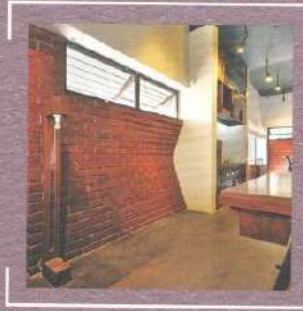




**Award Winning Indian Interiors 2012**

| Category                                       | Page      |
|--|-----------|
| <b>Jury's Choice Award</b>                     | 5 - 8     |
| <b>Residential<br/>Single Dwelling</b>         | 9 - 34    |
| <b>Residential<br/>Multi Dwelling</b>          | 35 - 56   |
| <b>Retail</b>                                  | 57 - 78   |
| <b>Commercial<br/>Workplace Small</b>          | 79 - 96   |
| <b>Commercial<br/>Workplace Large</b>          | 97 - 110  |
| <b>Hospitality</b>                             | 111 - 132 |
| <b>Healthcare</b>                              | 133 - 138 |
| <b>Institutional</b>                           | 139 - 146 |
| <b>Public &amp; Social Spaces</b>              | 147 - 158 |
| <b>Sustainable<br/>Interior Design</b>         | 159 - 170 |
| <b>Use of Traditional Crafts</b>               | 171 - 178 |
| <b>Furniture Design</b>                        | 179 - 190 |
| <b>Young Interior Designer<br/>of the Year</b> | 191 - 198 |
| <b>Jury Panel</b>                              | 199 - 208 |
| <b>Shortlisted Entries</b>                     | 209 - 217 |



# Commercial Workplace Small



Office spaces with carpet area upto 3,000 sq.ft.

# Shortlisted Entries



Categorywise entries in alphabetical order.

| <b>Commercial Workplace Small</b>                 | Zone |                       |                       | Page  |
|---|------|-----------------------|-----------------------|-------|
| ■ 4th Dimension, Mumbai                           | W1   | -                     | -                     | -     |
| ■ Aangan Architects, Surat                        | W3   | National Commendation | Regional Runner up    | 88    |
| ■ Abraham John Architects, Mumbai                 | W1   | -                     | Regional Runner up    | 92    |
| ■ Architect Vistap & Associates, New Delhi        | NE   | -                     | -                     | -     |
| ■ Architecture & Beyond, Surat                    | W3   | National Winner       | Regional Winner       | 82-85 |
| ■ Bhushan Chakote, Pune                           | W2   | -                     | Regional Runner up    | 93    |
| ■ Collage Architecture Studo, Bangalore           | S1   | National Commendation | Regional Commendation | 89    |
| ■ DIG Architects, Mumbai                          | W1   | National Runner up    | Regional Winner       | 86-87 |
| ■ INT HAB Architecture + Design Studio, Bangalore | S1   | -                     | Regional Winner       | 90-91 |
| ■ JTCPL Designs, Mumbai                           | W1   | -                     | Regional Commendation | 95    |
| ■ Morphogenesis, New Delhi                        | NE   | -                     | -                     | -     |
| ■ OCHRE, Bangalore                                | S1   | -                     | Regional Runner up    | 94    |
| ■ Prakaash Jadhav & Associates, Sangli            | W2   | -                     | -                     | -     |
| ■ Sandeep Shikre & Associates, Mumbai             | W1   | -                     | -                     | -     |
| ■ Studio An-V-Thot Architects Pvt Ltd, New Delhi  | NE   | -                     | -                     | -     |
| ■ Studio Infinity, Pune                           | W1   | -                     | Regional Commendation | 95    |
| ■ Untitled Design Consultants, New Delhi          | NE   | -                     | -                     | -     |

| <b>Commercial Workplace Large</b>          | Zone |                       |                       | Page    |
|--|------|-----------------------|-----------------------|---------|
| ■ Architect Vistap & Associates, New Delhi | NE   | -                     | -                     |         |
| ■ Archohm Consultants Pvt Ltd, Noida       | NE   | National Commendation | Regional Winner       | 101     |
| ■ Arvind Associates Pvt Ltd, Mumbai        | W1   | -                     | -                     |         |
| ■ Hiren Patel Architects, Ahmedabad        | W3   | -                     | -                     |         |
| ■ JTCPL Designs, Mumbai                    | W1   | -                     | -                     |         |
| ■ KNS Architects Pvt Ltd, Mumbai           | W1   | -                     | Regional Commendation | 111     |
| ■ Lotus Design Services, New Delhi         | NE   | -                     | Regional Runner up    | 101     |
| ■ Lovekar Design Associates, Pune          | W2   | -                     | Regional Winner       | 104-105 |
| ■ OCHRE, Bangalore                         | S1   | -                     | Regional Runner up    | 105     |
| ■ _Opolis Architects, Mumbai               | W1   | National Commendation | Regional Runner up    | 107     |
| ■ R C Architecture Pvt Ltd, Bangalore      | S1   | -                     | Regional Winner       | 106-107 |
| ■ Sandeep Shikre & Associates, Mumbai      | W1   | -                     | Regional Winner       | 102-103 |
| ■ Sankalpan Architects Pvt Ltd, Mumbai     | W1   | -                     | -                     |         |